



© Olivier Guerrin

# Bringing back light into the heart of la Défense with Hempel Solutions

Lightwell, Arkema's new headquarters in la Défense, is the result of an ambitious architectural transformation. The renovation aimed to transform a heavy, inward-looking office block into a modern, best-in-class workplace, while targeting the highest sustainability standards with a BREEAM Excellent certification.

Architects replaced pierced walls with transparent curtain facades and swapped massive concrete elements for an exposed steel framework, protected and enhanced by Hempel's coatings, freeing the elevations and allowing daylight to penetrate deep into the building.

**Marc Schuller**  
ARKEMA

Chief Operating Officer, Coating Solutions, Intermediates, and Advanced Materials businesses segments

“Lightwell is a powerful example of how innovation and sustainability can reshape the buildings of tomorrow. Its transformation into a bright workplace shows what becomes possible when partners share the same vision: creating spaces that are safer, more functional and designed for both people and the environment. Hempel's advanced coating solutions, developed with Arkema engineers and materials, help protect this remarkable structure and ensure its long-term performance.”

## THE CHALLENGE

Steel, light, sustainability: mastering complex refurbishment challenges.

The refurbishment of Arkema's new headquarters set out to create a modern, user-centric building meeting BREEAM Excellent and HQE Exceptionnel standards. Large transparent facades and open floor plates defined the design, but required exposed steel to remain flawless, durable and fire-protected. To support the sustainability ambition, materials – including the protective coating system – were selected to minimise environmental impact and ensure long-term performance within the constraints of a complex urban refurbishment.

## THE SOLUTION

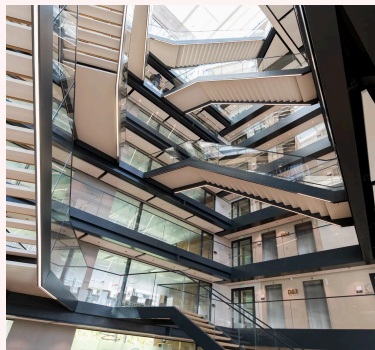
Hempel's low carbon system improved fire safety and preserved exposed steel look.

Co-developed with Arkema innovative materials, Hempel specified a three-coat system tailored to Lightwell's exposed steelwork. Hempadur Fast Dry 17410 delivered rapid, high-build corrosion protection to secure structural integrity and accelerate the programme. Hempafire Pro 315 provided up to 90 minutes of passive fire protection with a smooth film build, enabling lower DFTs and maintaining the steel's clean lines.

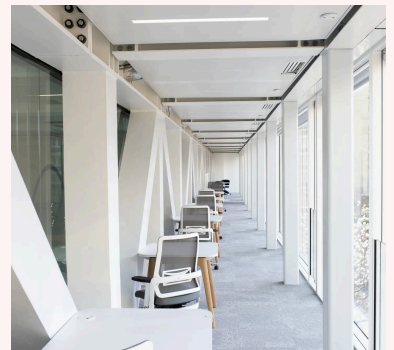
Hempathane HS 55613 sealed the system with superior colour retention and a uniform, architectural finish. Applied in a controlled sequence, key elements were completed off-site on prefabricated sections to minimise disruption and ensure quality. The low-VOC, EPD-supported system reduced application time and rework, delivering durable, low-maintenance performance while supporting BREEAM and HQE goals.

**Thomas Barthélémy,**  
 Architect, Barthélémy Griño

**“The architectural shift depended on coating systems that protect the steel from corrosion and fire while providing a clean, expressive finish.”**



© Les lucioles - Christopher Hibbert



© Olivier Guerrin

### At a glance

**ARCHITECT**  
 Barthélémy Griño

**PROJECT NAME**  
 Lightwell, Arkema's new headquarters

**ASSET**  
 35,000 m. office building

**LOCATION**  
 La Défense, Paris

**TECHNICAL PARTNER**  
 ARKEMA

**COATING SYSTEM**  
 Hempadur Fast Dry 17410  
 Hempafire Pro 315  
 Hempathane HS 55613

**OPENING DATE**  
 March 2025