

How to select the right paint system

Guidelines for corrosion protection
in accordance with ISO 12944



Introduction

The purpose of this document is to help you select the best Hempel coating system to protect your structure against corrosion. All steel structures, facilities and installations exposed to the atmosphere, submerged under water or in soil, suffer because of corrosion. Consequently they require protection from the harm caused by corrosion during their lifetime. Throughout this document you will find important information regarding paint technology, criteria for the right paint selection and surface preparation requirements.

This document has been prepared in accordance with the latest edition of the International Standard ISO 12944 “Paints and varnishes – Corrosion protection of steel structures by protective paint systems”. Hempel’s own guidelines and recommendations for coating protection technology are also included.

Outlined at the end are generic coating systems recommended by Hempel for different corrosive environments.

This document contains a series of guidelines and presents an overview of the changes to the ISO 12944 standard. It is in no way binding. If you would like specific information on your project please contact a member of the our technical team.





Table of contents

1. How to select the right paint system.....	6	3. Protective coatings	18
a. Environmental corrosivity	6	3.1 Generic types	18
b. Type of protected surface.....	8	3.2 Maximum service temperatures.....	19
c. The durability required for a paint system.....	8	4. Hempel's shade identification	20
d. Planning the paint application process	8	5. Useful definitions	21
2. Surface preparation.....	10	a. Waviness of paint film	21
2.1 Surface preparation grades.....	10	b. Size and shape of the surface.....	21
A. Grades of a surface according to the ISO 8501-1		c. Surface roughness of the substrate.....	21
standard.....	10	d. Physical losses	21
B. Surface preparation grades after high pressure		6. Hempel paint systems	22
water cleaning.....	12	C2 High Corrosivity Category.....	23
2.2 Types of surfaces.....	14	C3 Medium Corrosivity Category.....	24
A. Steel surfaces.....	14	C3 High Corrosivity Category.....	25
a. Bare steel structure with no previous protective		C4 High Corrosivity Category.....	26
coatings	14	C5 High Corrosivity Category.....	28
b. Steel surface covered with shop primers.....	15	C5 Very High Corrosivity Category.....	30
c. Steel surface coated with a paint system which		CX Corrosivity Category	31
needs to be maintained.....	16	Splash Zone Category.....	32
B. Hot dipped galvanised steel, aluminium and stainless		Immersion Category.....	33
steel surfaces.....	16	7. Notes	34
a. Hot dipped galvanised steel.....	16		
b. Aluminium and stainless steel.....	17		



1. How to select the right paint system

Selecting the correct paint system for protection against corrosion requires a variety of factors to be taken into account to ensure that the most economical and best technical solution is achieved. For each project the most important factors to consider before selecting a protective coating are:

a. Environmental corrosivity

When selecting a paint system it is vitally important to define the conditions in which the structure, facility or installation is to operate. To establish the effect of environmental corrosivity, the following factors must be taken into account:

- humidity and temperature (service temperature and temperature gradients)
- the presence of UV radiation
- chemical exposure (e.g. specific exposure in industrial plants)
- mechanical damage (impact, abrasion etc)

In the case of buried structures their porosity and the ground structures they are subject to, must be considered as well as the ground conditions which they are subject to.

The dampness and pH of the terrain and biological exposure to bacteria and micro-organisms are of critical importance.

In the case of water, the type and chemical composition of the water present is also significant.

The nature of the environment and the corrosive contributing conditions will have an effect on:

- the type of paint used for protection
- the total thickness of a paint system
- the surface preparation required
- minimum and maximum recoating intervals

Note that the more corrosive the environment, the more thorough the surface preparation required. The recoating intervals must also be strictly observed.

Part 2 of ISO 12944 standard gives the corrosion classifications for atmospheric conditions, soil and water. This standard is a very general evaluation based on the corrosion time for carbon steel and zinc. It does not reflect specific chemical, mechanical or temperature exposure. However the standard specification may still be accepted as a good indicator for paint system projects as a whole.

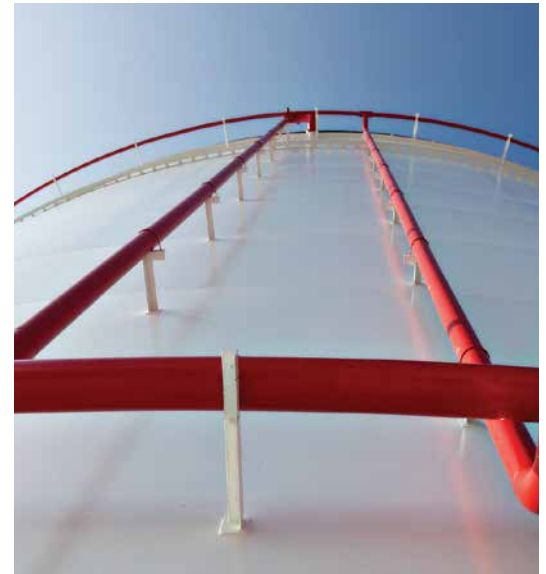
ISO 12944 distinguishes 6 basic atmospheric corrosivity categories:

C1	very low
C2	low
C3	medium
C4	high
C5	very high
CX*	extreme



*New category that covers offshore Part 9.

Corrosivity category	Environment examples	
	Exterior	Interior
C1 very low	-	Heated buildings with a clean atmosphere such as offices, shops, schools, hotels.
C2 low	Atmospheres contaminated to a small extent, mainly rural regions.	Buildings which are not heated, where condensation may occur e.g. storage facilities, sports halls.
C3 medium	Industrial and urban atmospheres with a low sulphur oxide (IV) contamination level. Inshore areas of low salinity.	Production halls to facilities humidity and certain air contamination e.g. foodstuff plants, laundries, breweries, dairies.
C4 high	Industrial areas and inshore areas of medium salinity.	Chemical plants, swimming pools, ship repair yards.
C5 very high	Industrial areas of high humidity and aggressive atmosphere and inshore areas of high salinity.	Buildings and areas of almost constant condensation and high contamination.
CX extreme*	Offshore areas of high salinity or industrial areas of extremely high humidity and aggressive atmosphere or subtropical and tropical areas.	Buildings and areas of almost constant condensation and aggressive contamination.



*New category that covers offshore Part 9.

How to select the right paint system

ISO 12944 distinguishes 4 corrosivity categories for the structures immersed in water or soil	
Im1	fresh water
Im2	sea or brackish water
Im3	soil
Im4*	sea or brackish water

Corrosivity categories	Environment	Examples of environments and structures
Im1	Fresh water	River installations, hydroelectric power plants.
Im2	Sea or brackish water	Immersed structures without cathodic protection (e.g. harbour areas with structures like sluice gates, locks, jetties, offshore structures).
Im3	Soil	Underground tanks, steel stilts, pipelines.
Im4*	Sea or brackish water	Immersed structures with cathodic protection (e.g. harbour areas with structures like sluice gates, locks, jetties, offshore structures).

*New category that covers offshore Part 9.

b. Type of protected surface

Designing a coating system normally involves dealing with construction materials such as steel, hot dipped galvanised steel, spray-metallised steel, aluminium or stainless steel. The surface preparation, the paint products used (particularly the primer) and the total system thickness will depend mainly on the construction material to be protected.

c. The durability required for a paint system

The lifetime of a paint system is assumed to be the period of time which passes until extraordinary maintenance is required for the first time after application. ISO 12944 specifies a range of four time frames to categorise durability:

LOW – L	up to 7 years
MEDIUM – M	7 to 15 years
HIGH – H	15 to 25 years
VERY HIGH – VH	more than 25 years



d. Planning the paint application process

The building schedule and the various stages of construction of any particular project determine how and when the paint system needs to be applied. Consideration needs to be given to materials at their prefabrication stage, when components are being prefabricated both off and on-site and when building stages are complete.

It is necessary to plan the job so that surface preparation and the drying/curing time of paint products in relation to temperature and humidity are considered. Also if one stage of construction takes place in a protected workshop environment and the next stage then takes place on site, recoating intervals must also be taken into account.



Our skilled personnel are always available to assist its customers in selecting the most adequate coating system or the customer's needs and requirements. For further information, please contact your local Hempel representative.

2. Surface preparation

2.1 Surface preparation grades

There are many ways to classify steel surface preparation grades but this study focuses on those outlined below.

A. Grades of a surface according to the ISO 8501-1 standard

Standard surface preparation grades for primary surface preparation by abrasive blasting methods	
Sa 3	<p>Blast-cleaning to visually clean steel</p> <p>When viewed without magnification, the surface shall be free from visible oil, grease and dirt, and shall be free from mill scale, rust, paint coatings and foreign matter¹. It shall have a uniform metallic colour.</p>
Sa 2 ½	<p>Very thorough blast-cleaning</p> <p>When viewed without magnification, the surface shall be free from visible oil, grease and dirt, and from mill scale, rust, paint coatings and foreign matter¹. Any remaining traces of contamination shall show only as slight stains in the form of spots or stripes.</p>
Sa 2	<p>Thorough blast-cleaning</p> <p>When viewed without magnification, the surface shall be free from visible oil, grease and dirt, and from most of the mill scale, rust, paint coatings and foreign matter¹. Any residual contamination shall be firmly adhering. (see note² below).</p>
Sa 1	<p>Light blast-cleaning</p> <p>When viewed without magnification, the surface shall be free from visible oil, grease and dirt, and from poorly adhering mill scale, rust, paint coatings and foreign matter¹.</p>

Notes:

¹ The term ‘foreign matter’ may include water-soluble salts and welding residues. These contaminants cannot always be completely removed from the surface by dry blast-cleaning, hand and power tool cleaning; wet blast-cleaning may be necessary.

² Mill scale, rust or a paint coating is considered to be poorly adhering if it can be removed by lifting with a blunt putty knife.

Standard preparation grades for primary surface preparation by hand cleaning	
St 3	<p>Very thorough hand and power tool cleaning</p> <p>As for St 2, but the surface shall be treated much more thoroughly to give a metallic sheen arising from the metallic substrate.</p>
St 2	<p>Thorough hand and power tool cleaning</p> <p>When viewed without magnification, the surfaces shall be free from visible oil, grease and dirt, and from poorly adhering mill scale, rust, paint coatings and foreign matter (see note below).</p>

Notes:

Preparation grade St 1 is not included as it corresponds to a surface unsuitable for painting.





B. Surface preparation grades after high pressure water cleaning

Surface preparation grades by high pressure water cleaning should not only include the cleanliness grade but also the flash rust grade, since flash rusting may occur on cleaned steel during the drying period. There are several ways to classify the degree to which a steel surface is prepared after high pressure water cleaning.

This document has used the ISO 8501-4 surface preparation grade standard using high pressure water jetting: **“Initial surface conditions, preparation grades and flash rust grades in connection with high pressure water jetting”**.

The standard applies to surface preparation by high pressure water cleaning for a paint coating. It distinguishes three levels of cleanliness with reference to visible contaminants (Wa 1 – Wa 2½) such as rust, mill scale, old paint coatings and other foreign matter:

Description of the surface after cleaning:	
Wa 1	Light high-pressure water jetting When viewed without magnification, the surface shall be free from visible oil and grease, loose or defective paint, loose rust and other foreign matter. Any residual contamination shall be randomly dispersed and firmly adherent.
Wa 2	Thorough high-pressure water jetting When viewed without magnification, the surface shall be free from visible oil, grease and dirt and most of the rust, previous paint coatings and other foreign matter. Any residual contamination shall be randomly dispersed and can consist of firmly adherent coatings, firmly adherent foreign matter and stains of previously existent rust.
Wa 2½	Very thorough high-pressure water jetting When viewed without magnification, the surface shall be free from all visible rust, oil, grease, dirt, previous paint coatings and, except for slight traces, all other foreign matter. Discoloration of the surface can be present where the original coating was not intact. The grey or brown/black discoloration observed on pitted and corroded steel cannot be removed by further water jetting.

Description of the surface appearance relating to three grades of flash rust:

L	Light flash rust A surface which, when viewed without magnification, exhibits small quantities of a yellow/brown rust layer through which the steel substrate can be seen. The rust (seen as a discolouration) can be evenly distributed or present in patches, but it will be tightly adherent and not easily removed by gentle wiping with a cloth.
M	Medium flash rust A surface which, when viewed without magnification, exhibits a layer of yellow/brown rust that obscures the original steel surface. The rust can be evenly distributed or present in patches, but it will be reasonably well adherent and it will lightly mark a cloth that is gently wiped over the surface.
H	Heavy flash rust A surface which, when viewed without magnification, exhibits a layer of red-yellow/brown rust that obscures the original steel surface and is loosely adherent. The rust layer can be evenly distributed or present in patches and it will readily mark a cloth that is gently wiped over the surface.



2.2 Types of surfaces

A. Steel surfaces

To guarantee that a coating system delivers long lasting protection, it is essential to ensure that the right surface preparation is carried out before any paint is applied. For this reason the initial surface condition of the steel needs to be evaluated.

Generally speaking, the condition of a steel surface prior to painting falls into one of the three following categories:

- a) a bare steel structure with no previous protective paint coatings
- b) a steel surface coated with a shop primer
- c) a steel surface coated with a paint system which needs to be maintained

These categories are outlined in more detail below.

a. Bare steel structure with no previous protective coatings

Steel surfaces which have never been protected by paint coatings may be covered to a varying extent by rust, mill scale or other contaminants (dust, grease, ionic contamination/soluble salts, residues etc.). The initial condition of such surfaces is defined by ISO 8501-1 standard: **“Preparation of steel substrates before application of paints and related products — Visual assessment of surface cleanliness”**.

ISO 8501-1 standard identifies four initial conditions for steel – A, B, C, D:

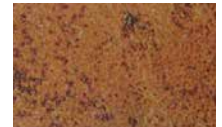
- A** Steel surface largely covered with adherent mill scale but little, if any, rust.



- B** Steel surface which has begun to rust and from which the mill scale has begun to flake.



- C** Steel surface on which the mill scale has rusted away or can be removed by scraping, but with slight pitting visible under normal vision.



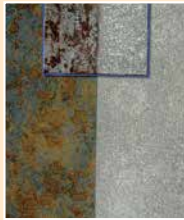
- D** Steel surface on which the mill scale has rusted away and on which general pitting is visible under normal vision.



The corresponding photographs show levels of corrosion, preparation grades of unprotected steel substrates and steel substrates after completely removing previous coatings.



A GRADE
Sa 2½



B GRADE
Sa 2½



C GRADE
Sa 2½



A GRADE
Sa 3



B GRADE
Sa 3



C GRADE
Sa 3



D GRADE
Sa 2½



D GRADE
Sa 3

b. Steel surface covered with shop primers

The main purpose of applying Shop primers is to protect steel plates and structural components used in the prefabrication stage, or in storage before a main paint system is applied. A shop primer film thickness normally equals 20–25 µm (these figures are quoted for a smooth test panel). Steel plates and structural components coated with shop primers can be welded.

Hempel offers the following shop primers:

Hempel's Shop Primer E 15280

(protection period 3 to 5 months) is a solvent-borne epoxy shop primer pigmented with zinc polyphosphate. It is designed for automatic spray application or manual application.

Hempel's Shop Primer ZS 15890

(protection period 6 to 9 months) is a solvent borne zinc silicate shop primer designed for automatic spray application.

Hempel's Shop Primer ZS 15820

(protection period 4 to 6 months) is a solvent borne zinc silicate shop primer, designed for automatic spray application.

Hempel's Shop Primer E 15275

(protection period 3 to 5 months) is a solvent-borne epoxy shop primer pigmented with zinc polyphosphate. It is designed for automatic spray application or manual application.

Surface preparation

Surfaces coated with a shop primer must be prepared correctly prior to the application of a finishing paint system; this is termed 'second surface preparation'. A Shop primer may need to be partially or completely removed. The second surface preparation will be determined by the finishing paint system and two key factors need to be taken into account:

- the compatibility of an applied shop primer and a finishing paint system
- the surface profile achieved during preparation prior to a Shop primer application, i.e. whether the profile is suitable for a finishing paint system

A surface coated with a shop primer should always be thoroughly washed with water and detergent (e.g. Hempel's Light Clean 99350) at 15–20 MPa, and then rinsed carefully prior to a paint system application. Corrosion and damage due to welding spots must be cleaned to the preparation grade as specified in the ISO 8501-1 standard.

c. Steel surface coated with a paint system which needs to be maintained

The condition of an existing paint system must be assessed using the degradation grade according to the standard and this must be done each time maintenance work is carried out. It will need to be determined whether the system should be completely removed or whether parts of the coating can remain. For the different amounts of

surface preparation required refer to ISO 8501-2 standard: "Preparation of steel substrates before application of paints and related products – Visual assessment of surface cleanliness – Preparation grades of previously coated steel substrates after localised removal of previous coatings".

B. Hot dipped galvanised steel, aluminium and stainless steel surfaces

In addition to standard steel, other non-iron materials can be used in construction such as hot dipped galvanised steel, aluminium or high-alloy steels. All of them require a separate approach in terms of surface preparation and the selection of a paint system.

a. Hot dipped galvanised steel

When galvanised steel is exposed to the atmosphere, zinc corrosion products form on its surface. These products vary in their composition and adhesion and therefore influence the adhesive properties of applied paint systems. It is generally considered that the best surface for painting is one of pure (within hours of the galvanisation process) or seasoned zinc. For stages in between it is recommended that the zinc corrosion products are removed by washing the surface with Hempel's Alkaline Cleaner. This can be carried out using a mixture of 20 litres of pure water to half a litre of Hempel's Light Clean 99350 detergent.

The mixture must be applied to the surface and then rinsed off after half an hour, preferably at high pressure. If necessary washing should be combined with scrubbing using a special hard nylon bristle brush, abrasive paper or the surface cleaned by an abrasive (glass balls, sand, etc.). For coating systems in lower corrosion classes, special adhesion primers are recommended. For coating systems in higher corrosion classes, surface preparation should include mechanical preparation of the surface, preferably by abrasive sweep blasting with a mineral abrasive.

b. Aluminium and stainless steel

In the case of aluminium and stainless steel, the surface should be cleaned with fresh water and a detergent, then rinsed off thoroughly by pressure washing with fresh water. To obtain better adhesion for the paint system it is recommended that abrasive blasting is carried out with a mineral abrasive or special brushes are used.

For further information and thorough explanations on processes and procedures of surface preparation, you can contact your local Hempel representative.



3. Protective coatings

3.1 Generic types

Physically drying:

Acrylic

Chemically curing:

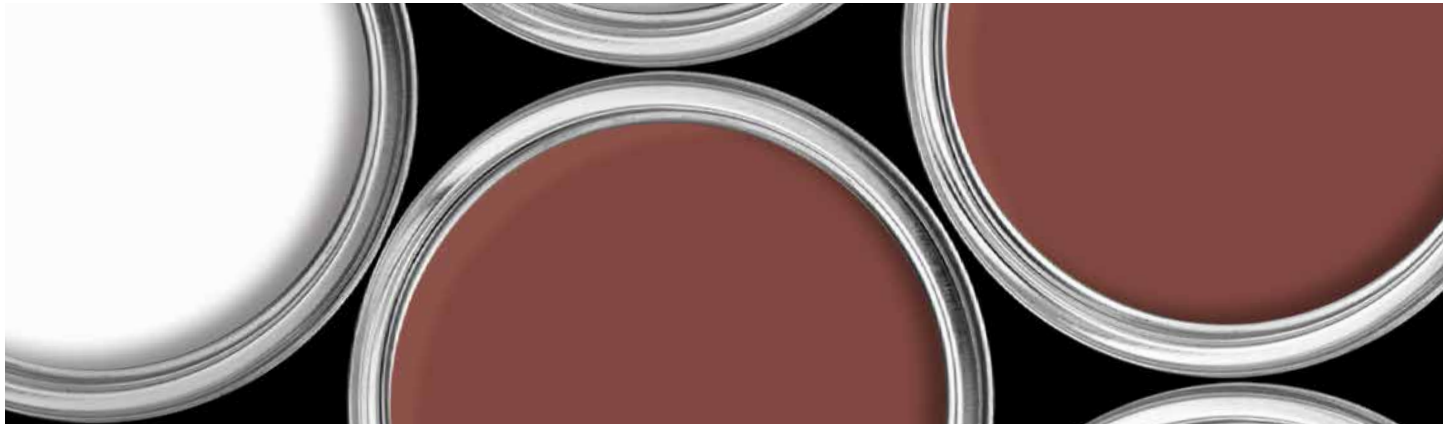
Alkyd

Epoxy, pure and modified

Polyurethane

Zinc silicate

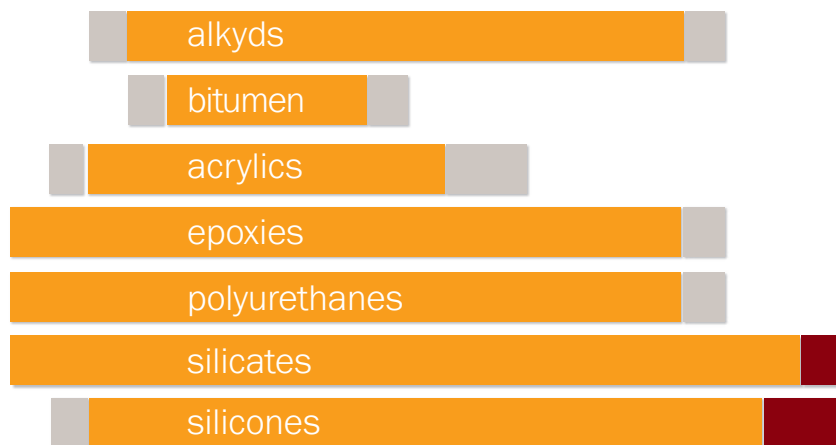
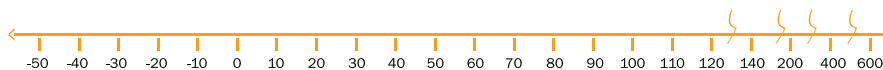
Polysiloxane hybrids



3.2 Maximum service temperatures

Paint products have different resistances to temperatures depending on the binder and pigments used. The temperature resistance of individual paint types is shown below.

Temperature °C



- Suitable for continuous dry service
- Suitable for short temporary service only
- Suitability will depend on pigmentation and binder composition

4. Hempel's shade identification

Paints, especially primers, are identified by a 5-digit number, as follows:

White	10000
Whitish, grey	10010–19980
Black	19990
Yellow, cream, buff	20010–29990
Blue, violet	30010–39990
Green	40010–49990
Red, orange, pink	50010–59990
Brown	60010–69990

Our standard shade numbers do not directly correlate to official colour standard numbers. However, in the case of finishing paints or other selected products, shades corresponding to specific official standard shades such as RAL, BS, NCS etc. may be established.

Shade identification example: **Hempaprime Multi 500 45950-11320**
Paint Hempaprime Multi 500 in Hempel Standard shade 11320



5. Useful definitions

There are several useful definitions and terms used in coating protection technology. Below we provide you with a selection of the necessary terms that you should be acquainted with when dealing with paints:

Volume solids

The volume solids (VS) figure is expressed as a percentage the ratio of:

$$\frac{\text{Dry film thickness}}{\text{Wet film thickness}}$$

The stated figure has been determined as the ratio between dry and wet film thickness of the coating applied in the indicated thickness under laboratory conditions, where no paint loss has been encountered.

Theoretical spreading rate

The theoretical spreading rate of the paint in a given dry film thickness on a completely smooth surface is calculated as follows:

$$\frac{\text{Volume solids \%} \times 10}{\text{Dry film thickness (micron)}} = \text{m}^2/\text{litre}$$

Practical consumption

The practical consumption is estimated by multiplying the theoretical consumption with a relevant Consumption Factor (CF).

The consumption factor or the practical consumption cannot be stated in the product Data Sheet because it depends on a number of external conditions such as:

a. Waviness of paint film

When paint is manually applied the film will show some waviness on the surface. It will also have an average thickness higher than the specified dry film thickness in order to fulfil the 80:20 rule for example. This means the paint consumption will be higher than the theoretically calculated amount if you want to reach the minimum specified film thickness.

b. Size and shape of the surface

Complex and small-sized surfaces will lead to higher consumption through overspray, than the square, flat area which was used to work out the theoretical calculation.

c. Surface roughness of the substrate

When a substrate has a particularly rough surface this creates a 'dead volume' which uses more paint than if the surface was smooth and this will affect any theoretical calculations. In the case of shop primers with a thin film, this has the effect of a seemingly larger surface, causing higher consumption as the paint film covers irregular surface hollows.

d. Physical losses

Factors such as residues in cans, pumps and hoses, discarded paint due to exceeded pot life, losses due to atmospheric conditions, insufficient skills of a painter etc. will all contribute to a higher consumption.

For further definitions or explanations, please contact your local Hempel representative.

6. Hempel paint systems

Recommended paint systems for various corrosivity categories and other types of environments (in accordance with ISO 12944:2018)

ISO 12944:2018 was published in 2018, a new revision of Part 5 was published in 2019. In this document when Part 5 is referenced it refers to the 2019 revision and when Part 6 is mentioned it refers to the 2018 version.

C2 High Corrosivity Category

Paint type		1st Coat	DFT (µm)	2nd Coat	DFT (µm)	Total DFT (µm)	VOC Reduction	CO ₂ Reduction	Productivity Benefits	UV Resistance
EP	SB	Hempaprime Multi 500	120	-	-	120	■ ■	■ ■	■ ■	■
PUR	SB	Hempathane Fast Dry 55750	120	-	-	120	■	■ ■	■ ■	■ ■
PASP*	SB	Hempatop Direct 700	100	-	-	100	■ ■ ■	■ ■ ■	■ ■ ■	■ ■
AY*	SB	Hempel's Pro Acrylic	100	-	-	100	■	■ ■	■ ■ ■	■ ■
AY	WB	Hemucryl 48190/1	160	-	-	160	■ ■ ■	■	■ ■ ■	■ ■
AY	WB	Hemucryl 48120	80	Hemucryl 48120	80	160	■ ■ ■	■	■	■ ■

■ good ■ ■ very good ■ ■ ■ excellent

Note: For the places that blasting as secondary surface preparation is not possible after production, the use of shop primed steel is an option. Zinc silicate based shop primers e.g. Hempel's Shop Primer ZS 15890 or 15820 are preferred – especially for later overcoating with zinc containing paints – Epoxy based shop primers E.g. Hempel Shop Primer 15280 can also be used in case of later overcoating with non – zinc containing paint. Ask Hempel for more specific guidelines regarding optimum choice of shop primer and need for secondary surface preparation. Please contact your local Hempel office for availability of test reports.

*Systems that pass the performance test assessments specified in ISO 12944 Part 6 but do not fulfil the paint system requirements of Part 5 in relation to total DFT or number of coats.

For advice on regional product availability and additional schemes, please contact your local Hempel representative or email hempel@hempel.com.

CO₂ Reduction: The carbon footprint is for square meter of surface area at the specified Dry Film Thickness and durability. Calculation includes raw materials, in-bound transport to the Hempel factory, Hempel manufacturing processes, and any Volatile Organic Compounds emitted in the application of the product.

VOC Reduction: The VOC is for square meter of surface area at the specified Dry Film Thickness.

Productivity Benefits: Qualitative indication of the achievable productivity based on number of coats and minimum overcoating intervals and drying times of topcoats.

UV Resistance: Expected colour and gloss retention of the finish coat when exposed to light.

* = EP; ** = PUR, PASP, AY; *** = PUR, PX.

AK = Alkyd
 AY = Acrylic
 AZ = Activated Zinc
 EP = Epoxy
 IOZ = Inorganic Zinc Silicate
 PASP = Polyaspartic
 PES = Polyester
 PUR = Polyurethane
 PX = Polysiloxane

DFT = Dry Film Thickness
 SB = Solvent Borne
 WB = Waterborne
 HDG = Hot-Dip Galvanization
 TSM = Thermal Spraying Metallizing
 NISO = Non-Isocyanate

C3 Medium Corrosivity Category

Also applies to C2 High and C4 Low categories

Paint type		1st Coat	DFT (µm)	2nd Coat	DFT (µm)	Total DFT (µm)	VOC Reduction	CO ₂ Reduction	Productivity Benefits	UV Resistance
EP	SB	Hempaprime Multi 500	120	-	-	120	■ ■	■ ■ ■	■ ■ ■	■
PUR	SB	Hempathane Fast Dry 55750	120	-	-	120	■	■ ■ ■	■ ■ ■	■ ■
PASP*	SB	Hempatop Direct 700	100	-	-	100	■ ■ ■	■ ■ ■	■ ■ ■	■ ■
AY	WB	Hemucryl 48190/1	160	-	-	160	■ ■ ■	■	■ ■ ■	■ ■
AY+AY	WB	Hemucryl 48120	80	Hemucryl 48120	80	160	■ ■ ■	■	■	■ ■
EP+PUR	WB	Hemudur 18500	80	Hemuthane WB Top 58530/1	40	120	■ ■ ■	■	■	■ ■
EP+PUR	HY	Hempaprime Multi 500	80	Hemuthane WB Top 58530/1	40	120	■ ■	■ ■	■ ■	■ ■

■ good ■ very good ■ ■ ■ excellent

*Systems that pass the performance test assessments specified in ISO 12944 Part 6 but do not fulfil the paint system requirements of Part 5 in relation to total DFT or number of coats.

For advice on regional product availability and additional schemes, please contact your local Hempel representative or email hempel@hempel.com.

AK = Alkyd
 AY = Acrylic
 AZ = Activated Zinc
 EP = Epoxy
 IOZ = Inorganic Zinc Silicate
 PASP = Polyaspartic
 PES = Polyester
 PUR = Polyurethane
 PX = Polysiloxane

DFT = Dry Film Thickness
 SB = Solvent Borne
 WB = Waterborne
 HDG = Hot-Dip Galvanization
 TSM = Thermal Spraying Metallizing
 NISO = Non-Isocyanate

C3 High Corrosivity Category

Also applies to C2 Very High, C4 Medium and C5 Low

Paint type		1st Coat	DFT (µm)	2nd Coat	DFT (µm)	Total DFT (µm)	VOC Reduction	CO ₂ Reduction	Productivity Benefits	UV Resistance
EP*	SB	Hempaprime Multi 500	180	-	-	180	■■■■	■■	■■■■	■
PASP*	SB	Direct 700	180	-	-	180	■■■■	■■	■■■■	■■
EP+PUR	SB	Hempadur Speed-Dry ZP 500	120	Hempathane Fast Dry 55750	60	180	■	■■	■■	■■
EP+PUR	SB	Hempaprime Multi 500	120	Hempathane HS 55610	60	180	■■	■	■■	■■
PUR*	SB	Hempathane Fast Dry 55750	160	-	-	160	■	■■■	■■■■	■■
AY+AY	WB	Hemucryl 48191	100	Hemucryl 48191	100	200	■■■■	■	■	■■
AY+AY	WB	Hemucryl 48120	100	Hemucryl 48120	100	200	■■■■	■	■	■■
EP+PUR*	HY	Hempaprime Multi 500	100	Hemuthane WB Top 58531	60	160	■■■■	■■	■■	■■
EP+AY	HY	Hempaprime Multi 500	100	Hemucryl 48120	80	180	■■■■	■■	■■	■■

■ good ■■■ very good ■■■■ excellent

*Systems that pass the performance test assessments specified in ISO 12944 Part 6 but do not fulfil the paint system requirements of Part 5 in relation to total DFT or number of coats.

For advice on regional product availability and additional schemes, please contact your local Hempel representative or email hempel@hempel.com.

AK = Alkyd
 AY = Acrylic
 AZ = Activated Zinc
 EP = Epoxy
 IOZ = Inorganic Zinc Silicate
 PASP = Polyaspartic
 PES = Polyester
 PUR = Polyurethane
 PX = Polysiloxane

DFT = Dry Film Thickness
 SB = Solvent Borne
 WB = Waterborne
 HDG = Hot-Dip Galvanization
 TSM = Thermal Spraying Metallizing
 NISO = Non-Isocyanate

C4 High Corrosivity Category

Also applies to C3 Very High and C5 Medium categories

Paint type		1st Coat	DFT (µm)	2nd Coat	DFT (µm)	3rd Coat	DFT (µm)	Total DFT (µm)	VOC Reduction	CO ₂ Reduction	Productivity Benefits	UV Resistance
EP	SB	Hempaprime Multi 500	120	Hempaprime Multi 500	120	-	-	240	■■■	■■	■■■	■
EP+PUR	SB	Hempaprime Multi 500	180	Hempathane HS 55610	60	-	-	240	■■■	■■■	■■■	■■■
EP+PUR*	SB	Hempaprime Multi 500	140	Hempathane HS 55610	60	-	-	200	■■■	■■■	■■■	■■■
AZ+EP+PUR*	SB	Hempadur Avantguard 550	40	Hempaprime Multi 500	100	Hempathane HS 55610	60	200	■■■	■■■	■	■■■
AZ+PUR*	SB	Hempadur Avantguard 550	75	Hempathane HS 55610	125	-	-	200	■	■	■■■	■■■
AZ+PUR*	SB	Hempadur Avantguard 550	60	Hempathane Fast Dry 55750	140	-	-	200	■	■■■	■■■	■■■
PUR	SB	Hempathane Fast Dry 55750	120	Hempathane Fast Dry 55750	120	-	-	240	■	■■■	■■■	■■■
AY*	SB	Hempatex Hi-Build 46410	120	Hempatex Hi-Build 46410	120	-	-	240	■	■	■■■	■■■
AY*	SB	Hempatex Hi-Build 46410	100	Hempatex Hi-Build 46410	100	Hempatex Enamel 56360	40	240	■	■	■■■	■■■
EP+PUR	HY	Hempadur Multi 500	180	Hemuthane WB Top 58530/1	60	-	-	240	■■■	■■■	■■■	■■■
EP+PUR	WB	Hemudur 18500	160	Hemuthane WB Top 58531	80	-	-	240	■■■	■	■	■■■
HDG+EP+PUR	SB	Hempadur 15570	100	Hempathane Fast Dry 55750	60	-	-	160	■	■■■	■	■■■

■ good ■■■ very good ■■■■ excellent

AK = Alkyd
 AY = Acrylic
 AZ = Activated Zinc
 EP = Epoxy
 IOZ = Inorganic Zinc Silicate
 PASP = Polyaspartic
 PES = Polyester
 PUR = Polyurethane
 PX = Polysiloxane

DFT = Dry Film Thickness
 SB = Solvent Borne
 WB = Waterborne
 HDG = Hot-Dip Galvanization
 TSM = Thermal Spraying Metallizing
 NISO = Non-Isocyanate

*Systems that pass the performance test assessments specified in ISO 12944 Part 6 but do not fulfil the paint system requirements of Part 5 in relation to total DFT or number of coats.



C5 High Corrosivity Category

Also applies to C4 Very High categories

Paint type		1st Coat	DFT (µm)	2nd Coat	DFT (µm)	3rd Coat	DFT (µm)	Total DFT (µm)	VOC Reduction	CO ₂ Reduction	Productivity Benefits	UV Resistance
EP+PUR	SB	Hempaprime Multi 500	240	Hempathane HS 55610	60	-	-	300	■■	■■■	■■	■■
EP+PUR*	SB	Hempaprime Core 670	200	Hempathane HS 5561B	70	-	-	270	■	■■■	■■	■■
AZ+EP+PUR*	SB	Hempadur Avantguard 550	60	Hempaprime Multi 500	140	Hempathane Topcoat 55210	60	260	■	■■	■■	■■
AZ+EP+PUR	SB	Hempadur Avantguard 750	50	Hempaprime Multi 500	150	Hempathane HS 55610	60	260	■	■■	■■	■■
AZ+EP+PUR*	SB	Hempadur Avantguard 750	40	Hempaprime Multi 500	120	Hempathane HS 55610	60	220	■■	■■■	■■	■■
AZ+PUR*	SB	Hempadur Avantguard 750	100	Hempathane Fast Dry 55750	160	-	-	260	■	■	■■■	■■
AZ+PASP*	SB	Hempadur Avantguard 750	60	Hempatop Direct 700	200	-	-	260	■■■	■■	■■■	■■
AZ+AY	HY	Hempadur Avantguard 750	60	Hemucryl 48120	100	Hemucryl 48120	100	260	■■■	■	■■	■■
AZ+EP+PUR*	HY	Hempadur Avantguard 750	75	Hemudur 18500	110	Hemuthane Enamel	40	225	■■■	■	■■	■■

■ good ■■ very good ■■■ excellent

AK = Alkyd
 AY = Acrylic
 AZ = Activated Zinc
 EP = Epoxy
 IOZ = Inorganic Zinc Silicate
 PASP = Polyaspartic
 PES = Polyester
 PUR = Polyurethane
 PX = Polysiloxane

DFT = Dry Film Thickness
 SB = Solvent Borne
 WB = Waterborne
 HDG = Hot-Dip Galvanization
 TSM = Thermal Spraying Metallizing
 NISO = Non-Isocyanate

C5 High Corrosivity Category

Also applies to C4 Very High categories

Paint type		1st Coat	DFT (µm)	2nd Coat	DFT (µm)	3rd Coat	DFT (µm)	Total DFT (µm)	VOC Reduction	CO ₂ Reduction	Productivity Benefits	UV Resistance
PUR	SB	Hempathane Fast Dry 55750	150	Hempathane Fast Dry 55750	150	-	-	300	■	■■	■■■	■■■
EP+EP+AY	WB	Hemudur 18500	100	Hemudur 18500	120	Hemucryl 48120	180	300	■■■	■	■	■■■
EP+AY	HY	Hempaprime Multi 500	220	Hemucryl 48120	80	-	-	300	■■■	■	■■■	■■■
EP+PUR	HY	Hempaprime Multi 500	250	Hemuthane WB Top 58530/1	50	-	-	300	■■■	■■■	■■■	■■■
HDG+EP+PUR	SB	Hempaprime Multi 500	140	Hempathane HS 55610	60	-	-	200	-	-	■	■■■
HDG+EP+PUR	SB	Hempadur 15553	80	Hempathane HS 55610	120	-	-	200	-	-	■	■■■

■ good ■■ very good ■■■ excellent

AK = Alkyd
 AY = Acrylic
 AZ = Activated Zinc
 EP = Epoxy
 IOZ = Inorganic Zinc Silicate
 PASP = Polyaspartic
 PES = Polyester
 PUR = Polyurethane
 PX = Polysiloxane

DFT = Dry Film Thickness
 SB = Solvent Borne
 WB = Waterborne
 HDG = Hot-Dip Galvanization
 TSM = Thermal Spraying Metallizing
 NISO = Non-Isocyanate

For advice on regional product availability and additional schemes, please contact your local Hempel representative or email hempel@hempel.com.

C5 Very High Corrosivity Category

Paint type	1st Coat	DFT (µm)	2nd Coat	DFT (µm)	3rd Coat	DFT (µm)	Total DFT (µm)	VOC Reduction	CO ₂ Reduction	Productivity Benefits	UV Resistance
AZ+EP+PUR	SB Hempadur Avantguard 550	60	Hempaprime Multi 500	200	Hempathane HS 55610	60	320	■■■	■■■■	■■■	■■■
AZ+EP+PUR	SB Hempadur Avantguard 750	60	Hempaprime Multi 500	200	Hempathane HS 55610	60	320	■■■	■■■	■■■	■■■
AZ+EP+PUR	SB Hempadur Avantguard 750	40	Hempaprime Multi 500	220	Hempathane HS 55610	60	320	■■■	■■■■	■■■	■■■
AZ+EP+PUR	SB Hempadur Avantguard 750	60	Hempaprime Multi 500	210	Hempathane 55930	50	320	■■■	■■■	■■■	■■■■
AZ+EP+PUR	SB Hempadur Avantguard 750	60	Hempaprime Multi 500	200	Hempaxane Light	60	320	■■■■	■	■■■	■■■■
AZ+PASP*	SB Hempadur Avantguard 750	60	Hempatop Direct 700	200	-	-	260	■■■■	■■■■	■■■■	■■■
AZ+EP+PUR*	SB Hempadur Avantguard 770	60	Hempaprime Multi 500	160	Hempaxane Light	60	280	■■■■	■■■	■■■	■■■■
AZ+EP+PUR*	SB Hempadur Avantguard 860	40	Hempaprime Multi 500	200	Hempathane HS 55610	60	300	■■■	■■■■	■■■	■■■
IOZ+EP+PUR	SB Hempel's Galvosil 15700	60	Hempaprime Multi 500	180	Hempathane HS 55610	80	320	■	■■■	■	■■■
HDG+EP+PUR	SB Hempadur 15553	60	Hempaprime Multi 500	100	Hempathane HS 55610	80	240	-	-	■	■■■

■ good ■■■ very good ■■■■ excellent

AK = Alkyd
 AY = Acrylic
 AZ = Activated Zinc
 EP = Epoxy
 IOZ = Inorganic Zinc Silicate
 PASP = Polyaspartic
 PES = Polyester
 PUR = Polyurethane
 PX = Polysiloxane

DFT = Dry Film Thickness
 SB = Solvent Borne
 WB = Waterborne
 HDG = Hot-Dip Galvanization
 TSM = Thermal Spraying Metallizing
 NISO = Non-Isocyanate

For advice on regional product availability and additional schemes, please contact your local Hempel representative or email hempel@hempel.com.

CX Corrosivity Category

Paint type		1st Coat	DFT (µm)	2nd Coat	DFT (µm)	3rd Coat	DFT (µm)	Total DFT (µm)	VOC Reduction	CO ₂ Reduction	Productivity Benefits	UV Resistance
AZ+EP+PUR	SB	Hempadur Avantguard 750	60	Hempaprime Multi 500	160	Hempathane HS 55610	60	280	■■■	■■■■	■■■	■■■
AZ+EP+AY (NISO)	SB	Hempadur Avantguard 750	60	Hempaprime Multi 500	160	Hempel's Pro Acrylic	60	280	■■■	■■■	■■■	■■■
AZ+EP+PUR	SB	Hempadur Avantguard 770	60	Hempaprime Multi 500	160	Hempathane HS 55610	60	280	■■■	■■■■	■■■	■■■
AZ+EP+AY (NISO)	SB	Hempadur Avantguard 770	60	Hempadur Quattro XO 17870	160	Hempel's Pro Acrylic	60	280	■■■	■■■	■■■	■■■
AZ+EP+PX (NISO)	SB	Hempadur Avantguard 770	60	Hempaprime Multi 500	160	Hempaxane Light	60	280	■■■■	■■■	■■■	■■■■
AZ+PX (NISO)*	SB	Hempadur Avantguard 770	120	Hempaxane Light	100	-	-	220	■■■■	■	■■■■	■■■■
AZ+PASP	SB	Hempadur Avantguard 770	80	Hempatop Direct 700	200	-	-	280	■■■■	■■■	■■■■	■■■
AZ+EP+EP+PUR	HY	Hempadur Avantguard 770	60	Hemudur 18500	100 + 80	Hempathane HS 55610	40	280	■■■■	■	■	■■■
AZ+EP+PUR	SB	Hempadur Avantguard 860	60	Hempaprime Multi 500	160	Hempathane HS 55610	60	280	■■■	■■■■	■■■	■■■
AZ+EP+PUR	SB	Hempadur Avantguard 860	60	Hempadur Quattro XO 17870	160	Hempathane HS 55610	60	280	■■■	■■■	■■■	■■■
AZ+EP	SB	Hempadur Avantguard 860	60	Hempaprime Multi 500	220	-	-	280	■■■■	■■■■	■■■	■
IOZ+EP+PUR	SB	Hempel's Galvosil 15700	60	Hempaprime Multi 500	160	Hempathane HS 55610	60	280	■	■■■■	■	■■■
IOZ+EP+AY (NISO)	SB	Hempel's Galvosil 15700	60	Hempadur Quattro XO 17870	160	Hempel's Pro Acrylic	60	280	■	■■■	■	■■■

■ good ■■■ very good ■■■■ excellent

AK = Alkyd
 AY = Acrylic
 AZ = Activated Zinc
 EP = Epoxy
 IOZ = Inorganic Zinc Silicate
 PASP = Polyaspartic
 PES = Polyester
 PUR = Polyurethane
 PX = Polysiloxane

DFT = Dry Film Thickness
 SB = Solvent Borne
 WB = Waterborne
 HDG = Hot-Dip Galvanization
 TSM = Thermal Spraying Metallizing
 NISO = Non-Isocyanate

For advice on regional product availability and additional schemes, please contact your local Hempel representative or email hempel@hempel.com.

Splash Zone Category

Paint type		1st Coat	DFT (µm)	2nd Coat	DFT (µm)	3rd Coat	DFT (µm)	Total DFT (µm)	VOC Reduction	CO ₂ Reduction	Productivity Benefits	UV Resistance
AZ+EP+EP	SB	Hempadur Avantguard 770	60	Hempaprime Multi 500	160	Hempaprime Multi 500	230	450	■■	■■■	■■	■
AZ+EP+PUR	SB	Hempadur Avantguard 770	50	Hempadur Multi-Strength 45753	320	Hempathane HS 55610	80	450	■	■■■	■	■■
EP+EP	SB	Hempadur Multi-Strength GF 35870	300	Hempadur Multi-Strength GF 35870	300	-	-	600	■	■■	■■	■
EP+EP	SB	Hempaprime Strength 530	300	Hempadur Strength 530	300	-	-	600	■■	■■■	■■■	■
EP+EP [†]	SF	Hempadur Multi-Strength 35840	300	Hempadur Multi-Strength 35840	300	-	-	600	■■■	■■■	■■	■
EP+EP [†]	SF	Hempadur Multi-Strength 35842	500	Hempadur Multi-Strength 35842	500	-	-	1000	■■■	■	■■	■
EP+EP+PUR [†]	SB	Hempadur Multi-Strength 45703	300	Hempadur Multi-Strength 45753	300	Hempathane HS 55610	60	660	■	■■	■	■■
EP+EP+EP [†]	SB	Hempadur 15590	40	Hempadur Multi-Strength 35840	300	Hempadur Multi-Strength 35840	300	640	■■	■■	■	■
EP+EP [†]	SF	Hempadur 35620	300	Hempadur 35620	300	-	-	600	■■■	■■■	■■	■
PES+PES [†]	SF	Hempel's Polyester GF 35920	300	Hempel's Polyester GF 35920	300	-	-	600	■■	■■	■■	■■

■ good ■■ very good ■■■ excellent

AK = Alkyd
 AY = Acrylic
 AZ = Activated Zinc
 EP = Epoxy
 IOZ = Inorganic Zinc Silicate
 PASP = Polyaspartic
 PES = Polyester
 PUR = Polyurethane
 PX = Polysiloxane

DFT = Dry Film Thickness
 SB = Solvent Borne
 WB = Waterborne
 HDG = Hot-Dip Galvanization
 TSM = Thermal Spraying Metallizing
 NISO = Non-Isocyanate

[†]Systems pre-qualified to NORSOK M-501 Rev 6 System 7A.

Immersion Category

Paint type		1st Coat	DFT (µm)	2nd Coat	DFT (µm)	Total DFT (µm)	VOC Reduction	CO ₂ Reduction	Productivity Benefits	UV Resistance
EP	SF	Hempadur Multi-Strength 35840	600	-	-	600	■■■■	■	■■■■	■
EP+EP	SB	Hempaprime Multi 500	175	Hempaprime Multi 500	175	350	■■	■■■	■■	■
EP+EP	SB	Hempaprime Multi 500	160	Hempaprime Multi 500	190	350	■■	■■■	■■	■
EP+EP	SF	Hempadur 15590	50	Hempadur Multi-Strength 35840	300	350	■■■■	■■	■■	■

■ good ■■ very good ■■■ excellent

AK = Alkyd
 AY = Acrylic
 AZ = Activated Zinc
 EP = Epoxy
 IOZ = Inorganic Zinc Silicate
 PASP = Polyaspartic
 PES = Polyester
 PUR = Polyurethane
 PX = Polysiloxane

DFT = Dry Film Thickness
 SB = Solvent Borne
 WB = Waterborne
 HDG = Hot-Dip Galvanization
 TSM = Thermal Spraying Metallizing
 NISO = Non-Isocyanate

For advice on regional product availability and additional schemes, please contact your local Hempel representative or email hempel@hempel.com.

Notes:



As a world-leading supplier of trusted coating solutions, Hempel is a global company with strong values, working with customers in the protective, marine, decorative, container and yacht industries. Hempel factories, R&D centres and stock points are established in every region.

Across the globe, Hempel's coatings protect surfaces, structures and equipment. They extend asset lifetimes, reduce maintenance costs and make homes and workplaces safer and more colourful. Hempel was founded in Copenhagen, Denmark in 1915. It is proudly owned by the Hempel Foundation, which ensures a solid economic base for the Hempel Group and supports cultural, social, humanitarian and scientific purposes around the world.

Hempel A/S

Lundtoftegaardsvej 91
2800 Kgs. Lyngby
Denmark

Tel: +45 4593 3800
Email: hempel@hempel.com